

TWOMASTER

Manuel Transfer Switches

63-3200A



TWOMASTER MTS Series - Changeover Switch

Product Description

TWOMASTER MTS 63-3200A is applied to changeover two groups of low voltage electric circuit or two groups of load devices or safety isolation.

Mode of operation:

Direct operation: handle is installed on the switch

Operation outside: handle is installed outside the door of power distribution board.

It have three poles and four poles (three poles + on and off neutral pole)

Two groups of auxiliary contacts can be assembled in factory.

Extended shaft is used for the operation outside the board.

Mechanical performance and electrical performance are correspond to MTS 63-3200A property.

The bridge connecting conductor can provided to connect the inlet or outlet terminals of the switch.

Note: The bridge connection is chosen, and it need to indicate the inlet or outlet connection with it.

Product Code



004-40A ; 006-63A ; 008-80A ;
010-100A ; 012-125A ; 016-160A
020-200A ; 025-250A ; 031-315A
040-400A ; 050-500A ; 063-630A
080-800A ; 100-1000A ; 120-1250A
160-1600A ; 200-2000A ; 250-2500A
320-3200A

3-3 Poles ; 4-4 Poles

1-Back to back ; 2-side to side

1-Side Opr.

Klas: 3

MTS

Characteristics

- Spring-storage instantaneous release of the mechanism to speed up the realization of the rapid marking and breaking (13.8 m / s), and it is nothing to do with the operation handle speed, and have greatly improved the capability of extinguish electric arc.
- The glass fiber reinforced unsaturated polyester resin casing have excellent flame resistance, dielectric, resist carbonic and resist impact performances.
- Parallel double gap contact possesses self-cleaning functions.
- All the contact materials are copper alloy plated with silver, and possess two separation contact surfaces.
- Large clearance of insulation.
- When it is "0" position, the product can lock the handle with three locks at the same time, and it can avoid error operation.



TWOMASTER MTS Series

General

MTS series changeover switch is applicable for AC 50Hz, rated voltage AC 690V and below, DC 440V and below, rated current up to 3200A. It can be applied for manually infrequent making and breaking.

Standard

IEC 60947-1(2001)

IEC 60947-3(2005)

Operation Environment

- Altitude not exceed 2000m
- Temperature: -5°C ~ $+40^{\circ}\text{C}$, Relative humidity not more than 95%
- No explosive dangerous medium environment
- No rain and snow attack environment

Note: If the load isolation switch is expected to be used in the condition that the ambient temperature is higher than $+40^{\circ}\text{C}$ or is lower than -5°C ~ -45°C , customers should inform to the manufactory.

Performance Feature

- 7 specifications of MTS series changeover switch from 63A to 3200A is basic model of modularized design type, have 3 poles and four poles (3 poles + on and off neutral pole). It is mainly applied for making and breaking, and switches
- Two group of auxiliary contacts can be assembled.
- The electric cable insulating cover can be assembled.

MTS Series

MTS 63A-3200A Electrical Properties And Mechanical Properties

Rated thermal current I _{th}			63A		100A		160A	
Rated current I _{th}			40	63	80	100	125	160
Rated insulation voltage U _i (V)			750	750	750	750	750	750
Dielectric strength (V)			5000	5000	5000	5000	5000	5000
Rated impulse withstand voltage U _{imp} kV (Installed category IV)			6	6	6	6	8	8
Rated working current I _e (A)	380V	AC-21	40	63	80	100	125	160
		AC-22	40	63	80	100	125	160
		AC-23	40	50	80	80	125	160
	690V	AC-21	40	50	80	80	125	160
		AC-22	32	32	50	50	125	160
		AC-23	25	25	40	40	80	80
	220V	DC-21	32	63	80	100	125	125
		DC-22	40	63	80	80	125	125
		DC-23	40	63	63	63	125	125
	440V	DC-21					100	125
		DC-22					100	125
		DC-23					100	125
Motor power P(380V) kW	380V		18.5	25	40	40	63	80
	690V		22	22	33	33	75	75
Rated short-time withstand current I _{cw} (kA Rms) 0.1S/1S			10/5	10/5	10/5	10/5	10/20	10/20
Rated breaking capacity I _{cn} (A Rms) AC23 380V			320	504				
Rated marking capacity I _{cm} (A Rms) AC23 380V			400	630				
Rated short-circuit making I _{cm} (kA)capacity			7.5	7.5				
Mechanical life (operation cycle times)			10000	10000	10000	10000	10000	10000
Electrical life (operation cycle times) Rated voltage U _e =690V	COSΦ=0.95 AC 21		1700	1700	1700	1700	1500	1500
	COSΦ=0.65 AC 22		100	100	100	100	1000	1000
	COSΦ=0.35 AC 23		500	500	500	500	500	500
Operation torque(Nm)			1.2	1.2	1.2	1.2	6.5	6.5

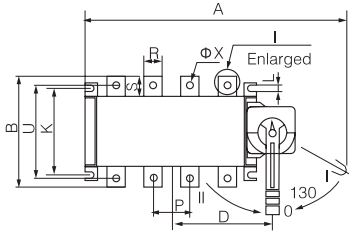
MTS Series

MTS 63A-3200A Electrical Properties And Mechanical Properties

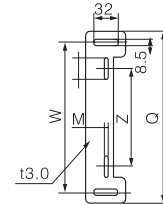
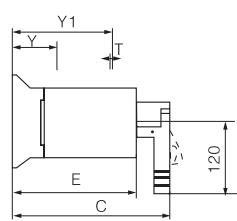
250A		630A				1600A			3200A		
200	200	315	400	500	630	1000	1250	1600	2000	2500	3200
750	750	1000	1000	1000	1000	1000	1000	1000	1000	1000	1000
5000	5000	8000	8000	8000	8000	10000	10000	10000	10000	10000	10000
8	8	12	12	12	12	12	12	12	12	12	12
200	250	315	400	500	630	1000	1250	1600	2000	2500	3200
200	250	315	400	500	630	1000	1250	1600	2000	2000	3200
200	250	315	340	425	536						
200	250	315	400	400	500	1000	1000	1600	2000	2500	2500
160	160	315	315	315	315	800	800	800	1000	1000	1000
100	125	125	125	125	125						
200	250	315	400	500	630	1000	1250	1600	2000	2500	2500
200	250	315	400	400	500	1000	1250	1250	1600	1600	1600
160	200										
160	200	315	400	400	500	1000	1250	1250	2000	2000	2000
160	200	315	400	400	500	1000	1250	1250	1250	1250	1250
160	200	315	400	400	500	1000	1000	1000			
100	132	160	220	280	315	560	560	560	710	710	710
90	110	185	185	185	185	475	475	475	750	750	750
12/30	12/30	45/20	45/20	50/25	50/25	90/50	90/50	90/50	90/50	90/50	90/50
1600	1600	2500	3200	3200	3200						
2000	2000	3150	4000	4000	4000						
17	17	30	30	40	40						
10000	10000	5500	5500	5500	5500	4000	4000	3000	2500	2500	2500
1500	1500	750	750	750	750	600	600	450			
1000	1000	500	500	500	500	400	400	300			
500	500	250	250	250	250	200	200	150			
10	10	14.5	14.5	14.5	14.5	37	37	60	60	60	60

MTS Series

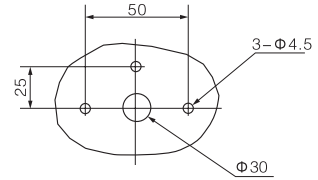
MTS 63A-3200A Changeover Switch



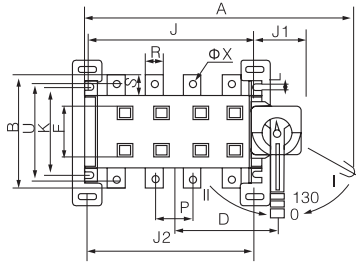
MTS 125-1600A Direct operation



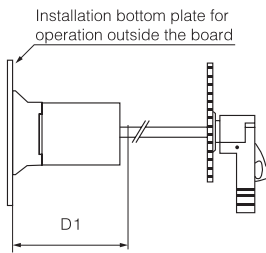
Installation bottom plate for operation outside the board



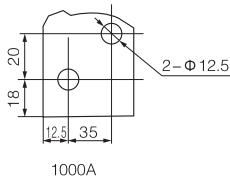
Installation size of operation outside board handle



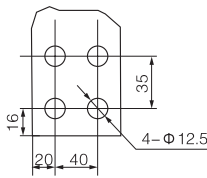
MTS 125-1600A External operation



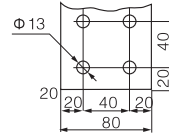
Specification	Dimension of bottom plate				
	I	M	Z	W	Q
125~1600A					
125A	55	6.5	95	216	244
160A	55	6.5	95	216	244
200A	55	6.5	116	216	244
250A	55	6.5	116	216	244
315-400A	60	8.5	180	280	311
500-630A	60	8.5	180	280	311
1000-1600A	60	8.5	180	280	311



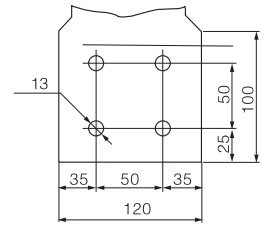
1000A



1250-1600A



2000-2500A

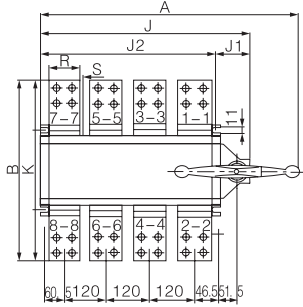


3150-4000A

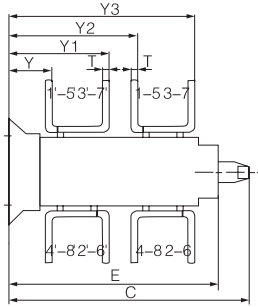
Specification	Overall and mounting dimensions																				
	A	B	C	D	D1	E	J	J1	J2	K	L	P	R	S	T	U	ΦX	Y	Y1	F	
125-630A																					
125A-160A/3	270	135	212	89	195	150	120	65	120	95	7	36	20	25	3.5	115	9	55	121	59	
125A-160A/4	300	135	212	104	195	150	150	65	150	95	7	36	20	25	3.5	115	9	55	121	59	
200A-250A/3	307	170	260	110	215	172	160	65	160	115	11	50	25	30	3.5	140	11	70	140	76	
200A-250A/4	357	170	260	135	215	172	210	65	210	115	11	50	25	30	3.5	140	11	70	140	76	
315A-400A/3	372	240	297	150	275	236	210	77	210	180	13	65	32	40	5	206	11	83	192	94	
315A-400A/3	432	240	297	180	275	236	275	77	275	180	13	65	32	40	5	206	11	83	192	94	
500A-630A/3	372	240	297	150	275	236	210	77	210	180	13	65	32	40	6	206	11	83	192	94	
500A-630A/4	432	240	297	180	275	236	275	77	275	180	13	65	32	40	6	206	11	83	192	94	

MTS Series

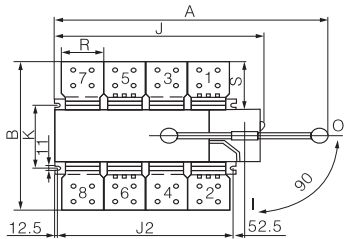
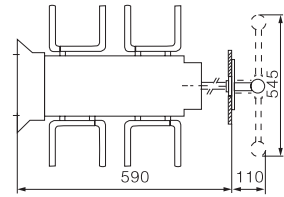
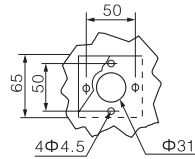
MTS 63A-3200A Changeover Switch



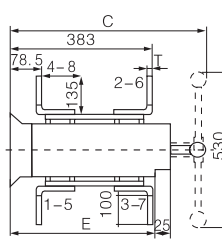
MTS 2000-2500A Direct operation



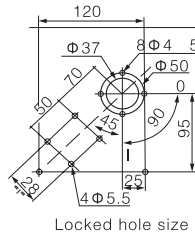
MTS 2000-2500A External operation



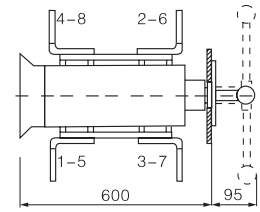
MTS 3200A Direct operation



MTS 3200A External operation



Locked hole size



Specification	Overall and mounting dimensions																			
	A	B	C	D	D1	E	J	J1	J2	K	P	R	S	T	ΦX	Y	Y1	Y2	Y3	
1000~3150A																				
1000A/3	638	312	374	229	340	302	355	108.5	355	220	120	60	56	8	12.5	99	243.5			
1000A/4	758	312	374	289	340	302	473	108.5	473	220	120	60	56	8	12.5	99	243.5			
1250A/3	638	338	374	229	340	302	355	108.5	355	220	120	80	69	8	12.5	99	243.5			
1250A/4	758	338	374	289	340	302	473	108.5	473	220	120	80	69	8	12.5	99	243.5			
1600A/3	638	338	374	229	340	302	355	108.5	355	220	120	80	69	10	12.5	99.5	244			
1600A/4	758	338	374	289	340	302	473	108.5	473	220	120	80	69	10	12.5	99.5	244			
2000A/3	576	455	603	603	700	495	347	88	355	220	120	80	127.5	10	12.5	78.5	225.5	309.5	456.5	
2000A/4	696	455	603	603	700	495	467	88	473	220	120	80	127.5	10	12.5	78.5	225.5	309.5	456.5	
2500A/3	576	455	603	603	700	495	347	88	355	220	120	80	127.5	10	12.5	78.5	227.5	309.5	456.5	
2500A/4	696	455	603	603	700	495	467	88	473	220	120	80	127.5	10	12.5	78.5	227.5	309.5	456.5	
3200A/3	576	505	603	603	700	495	347	88	355	220	120	120	152.5	12	12.5	78.5	227.5	309.5	458	
3200A/4	696	505	603	603	700	495	467	88	473	220	120	120	152.5	12	12.5	78.5	227.5	309.5	458	

TWOMASTER

manages the energy



OSSA

manages the energy

İvedik OSB Melih Gökçek Bulvarı Eminel İş Merkezi

No:18/101 Yenimahalle / ANKARA / TÜRKİYE

Tel : +90 312 394 6772 / +90 312 394 OSSA

Fax : +90 312 394 6771

Email : info@twomaster.com.tr

Web : www.twomaster.com.tr